



May 1997

EMBARGO: 11:30 AM (CANBERRA TIME) FRI 30 MAY 1997

Monthly Summary of Statistics

Western Australia

NOTES

FORTHCOMING ISSUES

<i>ISSUE</i>	<i>RELEASE DATE</i>
June 1997	30 June 1997
July 1997	31 July 1997
Aug 1997	29 August 1997

.....

SYMBOLS AND OTHER USAGES

n.a.	not available
n.e.i.	not elsewhere included
n.p.	not available for publication but included in totals where applicable
n.y.a.	not yet available
—	nil or rounded to zero
..	not applicable
*	subject to sampling variability too high for most practical purposes
p	preliminary - figure or series subject to revision
r	figure or series revised since previous issue
---	break in continuity of series (where drawn between two consecutive figures or columns)

.....

INQUIRIES

For information about other ABS statistics and services, please refer to the back of this publication.

For further information about these statistics, contact Information Services on

(08) 9 360 5140.

P.C. KELLY
REGIONAL DIRECTOR

CONTENTS

Page

TABLES

Population

1.1	Estimated Resident Population	4
1.2	Components of Population Change	5
1.3	Registrations of Births, Deaths, Marriages and Divorces	6
1.4	Rates of Birth, Deaths, Marriages and Divorces	7

Tourism

2.1	Overseas Arrivals and Departures	8
2.2	Short term Overseas Visitor Arrivals from Selected Countries	9
2.3	Short Term Overseas Visitor Arrivals by Air, Purpose of Journey: Holiday	10
2.4	Short Term Overseas Resident Departures to Selected Destinations	11
2.5	Short Term Overseas Resident Departures by Air, Purpose of Journey: Holiday	12
2.6	Tourist Accommodation	13

Employment

3.1	Labour Force Status: Seasonally Adjusted	14
3.2	Labour Force Status: Trends	15
3.4	Industrial Disputes Causing Stoppage of Work	16

Retail

4.1	Monthly Retail Turnover: Original Estimates	17
-----	---	----

Construction

5.1	New Residential Building Approved	18
5.2	New Non-Residential Building Approved	19
5.3	Selected Housing Price Indexes: Perth	19
5.4	Price Index of Materials Used in Building Other Than House Building: Perth ..	20

Production

6.1	Livestock Slaughtered	21
6.2	Meat Produced	21
6.3	Wool Receivals	22
6.4	Energy Production	23
6.5	Mineral Exploration: Expenditure by Type of Mineral Sought	24
6.6	Mineral Production	24

Overseas Trade

7.1	Imports by Selected Divisions	25
7.2	Exports by Selected Divisions	26

Transport

8.1	New Motor Vehicle Registrations	27
8.2	Vehicle Registration Statistics	27

Finance

9.1	Private New Capital Expenditure by Selected Industry Groups	28
9.2	State Final Demand and Production Account	29

Statistical Summary

10.1	Key State Indicators	30
------	----------------------------	----

1.1

ESTIMATED RESIDENT POPULATION

AT END OF PERIOD.....

	<i>Males</i>	<i>Females</i>	<i>Persons</i>	<i>Mean Population</i>
	'000	'000	'000	'000
Financial Years				
1993-94	854.6	846.4	1 701.1	1 688.5
1994-95	869.5	861.6	1 731.2	1 716.1
1995-96 p	884.9	877.9	1 762.7	1 747.2
Calendar years				
1993	847.9	839.5	1 687.4	1 677.1
1994 p	861.1	853.2	1 714.3	1 702.0
1995 p	876.9	869.5	1 746.4	1 731.2
Quarters				
Jun 95	869.5	861.6	1 731.2	..
Sep 95 p	873.7	865.8	1 739.5	..
Dec 95 p	876.9	869.5	1 746.4	..
Mar 96 p	881.3	874.3	1 755.5	..
Jun 96 p	884.9	877.9	1 762.7	..
Sep 96 p	889.0	882.0	1 771.0	..

Reference: Australian Demographic Statistics (3101.0)

ANALYSIS OF TABLE 1.1

The estimated resident population of Western Australia at 30 September 1996 was 1,771,000, an increase of 8,300 in the September quarter and 31,500 since 30 September 1995. The growth rate during the twelve months to 30 September 1996 was 1.81 % compared with a growth rate of 1.75 % for the preceding twelve month period.

1.2 COMPONENTS OF POPULATION CHANGE

	Natural increase	Net estimated overseas migration(a)	Net estimated interstate migration	Total increase
	'000	'000	'000	'000
Financial Years				
1993-94	14.3	6.7	3.7	24.7
1994-95	14.7	10.5	4.9	30.1
1995-96 p	14.2	13.5	3.8	31.6
Calendar years				
1993	14.5	5.6	0.6	20.7
1994 p	14.5	8.0	4.5	26.9
1995 p	14.6	13.2	4.3	32.0
Quarters				
Jun 95	3.6	2.9	1.3	7.8
Sep 95 p	3.4	3.9	1.1	8.3
Dec 95 p	3.5	3.1	0.2	6.9
Mar 96 p	3.7	4.4	1.1	9.1
Jun 96 p	3.7	2.2	1.4	7.2
Sep 96 p	3.1	3.9	1.3	8.3

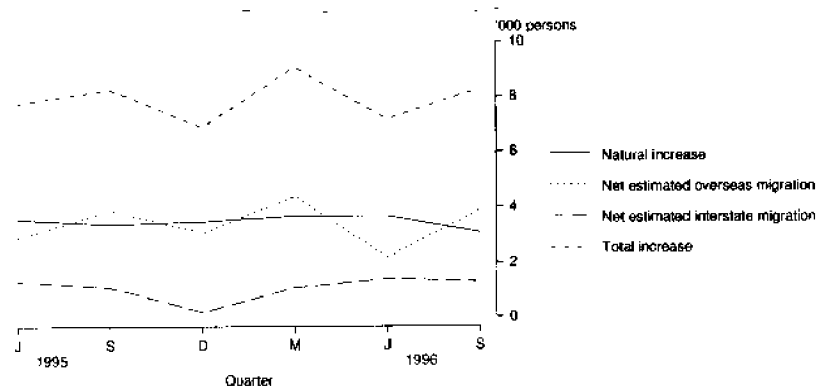
(a) Includes an adjustment for 'category jumping'

Reference: Australian Demographic Statistics (3101.0)

ANALYSIS OF TABLE 1.2

In the September quarter 1996 the population increased by 8,300 compared with an increase of 7,200 in the previous quarter. The natural increase of 3,100 was the lowest recorded in the nineties. However, this was more than offset by a significant increase in the level of net estimated overseas migration; up from 2,200 in the June quarter to 3,900 in the September quarter. Net estimated interstate migration fell slightly to 1,300.

COMPONENTS OF POPULATION CHANGE, WESTERN AUSTRALIA



1.3 - REGISTRATION OF BIRTHS, DEATHS, MARRIAGES AND DIVORCES

	<i>Live Births</i>	<i>Infant Deaths</i>	<i>Total Deaths</i>	<i>Marriages</i>	<i>Divorces</i>
Financial Years					
1993-94	25 309	148	10 522	10 316	4 934
1994-95	25 022	137	10 261	10 381	4 930
1995-96 p	24 872	141	10 669	10 019	5 195
Calendar years					
1993	25 079	143	10 318	10 382	4 654
1994	25 124	137	10 295	10 366	5 024
1995	25 122	128	10 361	10 404	5 040
Quarters					
Mar 95	6 417	38	2 314	3 247	1 081
Jun 95	6 348	32	2 598	2 367	1 158
Sep 95	6 311	30	2 917	1 524	1 332
Dec 95	6 046	28	2 532	3 266	1 469
Mar 96 p	6 233	54	2 588	2 935	1 231
Jun 96 p	6 282	29	2 632	2 294	1 163
Sep 96 p	6 192	37	3 092	1 458	1 294

Reference: Australian Demographic Statistics (3101.0)

ANALYSIS OF TABLE 1.3

The number of marriages fell by 641 in June quarter 1996 from the previous quarter. This compares with a fall of 880 marriages in the same period a year ago.

The number of infant deaths dropped by 25 from March quarter 1996 while the total number of deaths increased by 44 in the same period.

1.4 RATES OF BIRTHS, DEATHS, MARRIAGES AND DIVORCES

	Live Births(a)	Infant Deaths(b)	Total Deaths(a)	Marriages(a)	Divorces(a)
Financial Years					
1993-94	15.0	5.9	6.2	6.1	2.9
1994-95	14.6	5.5	6.0	6.1	2.9
1995-96 p	14.1	5.7	6.0	5.7	2.9
Calendar years					
1993	15.0	5.7	6.2	6.2	2.8
1994	14.8	5.5	6.1	6.1	3.0
1995	14.4	5.1	6.0	6.0	2.9
Quarters					
Mar 95	14.9	5.9	5.4	7.6	2.5
Jun 95	14.7	5.0	6.0	5.5	2.7
Sep 95	14.6	4.8	6.7	3.5	3.1
Dec 95	13.9	4.6	5.8	7.5	3.4
Mar 96 p	14.2	8.7	5.9	6.7	2.8
Jun 96 p	14.3	4.6	6.0	5.2	2.6
Sep 96 p	14.0	6.0	7.0	3.3	2.9

(a) For financial and calendar years the rate is per '000 mean resident population.

For quarters, the mean is the average of the previous and current quarterly population.

(b) Infant deaths per 1,000 live births.

Reference: Australian Demographic Statistics (3101.0)

ANALYSIS OF TABLE 1.4

The rate for infant deaths in June quarter 1996 was the equal lowest recorded in the last six quarters. The rate for marriages was the second lowest recorded.

For more information regarding tables on Vital statistics please contact Mike Joske on (08) 9360 5276

2.1 OVERSEAS ARRIVALS AND DEPARTURES BY MONTH

	SHORT-TERM ARRIVALS.....			LONG-TERM ARRIVALS.....		Total Arrivals
	Permanent Arrivals	Australian Residents	Overseas Visitors	Australian Residents	Overseas Visitors	
ARRIVALS						
Financial Years						
1993-94	7 740	269 890	297 750	8 900	7 430	591 700
1994-95	10 380	289 250	339 690	9 070	8 470	656 850
1995-96	11 320	308 110	361 180	8 600	10 170	699 380
Months						
Dec 95	1 040	18 450	46 800	1 260	510	68 070
Jan 96	1 150	36 460	24 250	840	1 460	65 170
Feb 96	940	20 650	39 640	630	2 530	64 380
Mar 96	900	20 660	31 010	670	560	53 810
Apr 96	850	23 670	32 270	580	660	58 020
May 96	680	20 100	22 550	500	380	44 210
Jun 96	860	25 530	26 720	630	500	54 250
Jul 96	910	31 490	28 780	670	1 900	63 750
Aug 96	840	28 570	28 950	580	500	59 430
Sep 96	860	31 390	27 540	640	540	60 970
Oct 96	940	38 310	34 460	690	740	75 130
Nov 96	1 000	25 040	37 270	930	480	64 730
Dec 96	990	18 980	49 430	1 450	490	71 340
Jan 97	900	39 040	29 630	870	1 850	72 290
Feb 97	780	21 440	39 350	620	2 700	64 900

	SHORT-TERM DEPARTURES.....			LONG-TERM DEPARTURES....		Total Departures
	Permanent Departures	Australian Residents	Overseas Visitors	Australian Residents	Overseas Visitors	
DEPARTURES						
Financial Years						
1993-94	3 430	274 770	29 540	7 340	4 140	580 220
1994-95	3 580	292 270	343 610	7 560	4 710	651 730
1995-96	3 890	305 910	366 340	7 680	5 480	689 300
Months						
Dec 95	370	33 040	38 900	650	1 110	74 070
Jan 96	410	19 640	37 530	1 010	380	58 970
Feb 96	320	17 840	35 700	730	440	55 030
Mar 96	350	25 730	32 970	750	400	60 200
Apr 96	330	23 540	33 160	670	330	58 030
May 96	370	25 720	27 520	630	270	54 500
Jun 96	200	29 410	31 240	530	560	61 940
Jul 96	340	32 280	25 420	640	560	59 240
Aug 96	270	27 420	29 840	660	390	58 580
Sep 96	260	34 960	25 200	520	370	61 320
Oct 96	250	26 830	28 770	500	330	56 680
Nov 96	320	24 850	32 650	530	590	58 950
Dec 96	310	35 260	42 400	730	1 180	79 880
Jan 97	370	23 760	41 050	1 120	500	66 800
Feb 97	280	20 340	36 760	710	410	58 500

Reference: Unpublished table PMTR0001. Since figures have been rounded to the nearest ten, discrepancies may occur between sums of component items and totals.

2.2- SHORT-TERM OVERSEAS VISITOR ARRIVALS FROM SELECTED COUNTRIES(a)

	COUNTRY OF ORIGIN.....					Total(b)
	New Zealand	UK & Ireland	Indonesia	Japan	Singapore	
Financial Years						
1993-94	25 150	57 480	27 840	27 530	50 700	297 750
1994-95	24 330	61 070	44 240	28 980	59 600	339 690
1995-96	24 200	59 220	49 260	30 120	64 690	361 180
Months						
Dec 95	2 360	8 370	7 650	2 970	11 040	46 800
Jan 96	1 700	5 760	2 920	2 670	2 400	24 250
Feb 96	1 760	6 440	8 150	3 190	6 460	39 640
Mar 96	2 280	6 010	3 320	2 900	4 760	31 010
Apr 96	2 260	5 990	3 360	2 460	5 760	32 270
May 96	1 630	2 160	2 610	1 320	5 270	22 550
Jun 96	1 660	2 610	4 950	1 290	6 970	26 720
Jul 96	3 000	2 610	5 190	3 430	3 310	28 780
Aug 96	2 100	3 480	3 670	3 720	4 800	28 950
Sep 96	2 430	4 860	2 500	3 220	3 550	27 540
Oct 96	2 740	5 470	4 250	2 430	4 690	34 460
Nov 96	1 680	9 350	3 120	2 170	7 850	37 270
Dec 96	2 400	10 090	6 840	3 990	7 630	49 430
Jan 97	1 940	7 200	3 400	3 220	2 500	29 630
Feb 97	1 410	6 440	7 930	3 040	5 060	39 350

(a) Comprises travellers whose intended or actual stay is less than twelve months.

(b) Total includes countries not listed in this table.

Reference: Unpublished table PMTR0013

ANALYSIS OF TABLE 2.1

Total arrivals in February 1997 were 10% lower than in the previous month but were 1% higher than in February 1996.

The number of Australian residents returning from short-term visits overseas fell by 45% from the previous month to 21,440 persons. This was 4% higher than in February 1996. The number of overseas visitors arriving in Western Australia for short-term visits increased by 33% from January 1997 but was down by 1% on a year ago.

The number of residents returning to Western Australia after a long-term stay overseas in February 1997 fell by 29% from the previous month to a comparable level of February 1996. Long-term overseas visitors rose by 46% on January 1997 to their highest level in 15 months and were up by 7% on February 1996.

Total departures in February 1997 fell by 12% from the previous month but were 6% higher than in February 1996.

The number of short-term departures of Australian residents dropped by 14% on January 1997 but was still up by 14% on February 1996. Short-term departures of overseas visitors fell by 10% from January 1997. The number of long-term departures of overseas visitors fell by 18% whilst long-term departures of Australian residents dropped by 37% on January 1997, repeating the pattern of twelve months ago for Australian residents.

ANALYSIS OF TABLE 2.2

Total short-term overseas visitor arrivals rose by 9,720 on January 1997. The total of 39,350 arrivals in February month 1997 was 1% lower than in February 1996.

The number of visitors from Indonesia was the second highest recorded in 15 months, only 220 persons lower than February 1996. Singapore registered a rise of 102% over January 1997 but visitors from New Zealand fell by 27%, the United Kingdom and Ireland by 11% and Japan by 6%. Compared to February 1996, visitors from Singapore fell by 22%.

2.3

SHORT TERM OVERSEAS VISITOR ARRIVALS BY AIR, PURPOSE OF JOURNEY: HOLIDAY

	COUNTRY OF ORIGIN.....								Total(a)
	New Zealand	UK & Ireland	Indonesia	Japan	Malaysia	Singapore	Thailand	United States	
Financial Years									
1993-94	9 160	22 260	20 850	24 460	19 180	39 370	7 950	2 910	180 850
1994-95	7 720	19 290	33 350	24 640	19 200	45 100	7 180	2 760	193 880
1995-96	6 800	19 010	35 610	23 840	20 800	47 520	8 770	3 250	200 560
Months									
Dec 95	450	2 220	6 640	2 640	1 010	9 240	880	410	28 500
Jan 96	320	2 120	1 740	2 240	510	1 270	430	280	11 620
Feb 96	640	1 990	6 400	2 390	2 840	4 320	460	140	23 030
Mar 96	670	1 930	2 520	2 650	1 490	3 520	870	590	17 510
Apr 96	540	1 660	2 050	1 750	2 410	4 330	1 620	170	17 140
May 96	230	810	1 960	1 000	2 760	4 150	790	320	13 580
Jun 96	580	500	3 850	780	2 240	5 640	610	250	16 240
Jul 96	470	1 140	3 200	2 900	1 440	1 480	590	190	14 280
Aug 96	580	870	2 220	3 300	2 790	3 650	980	100	17 310
Sep 96	1 150	1 650	1 360	2 490	1 670	2 510	550	190	14 360
Oct 96	550	1 680	2 800	1 810	2 280	3 410	1 610	200	18 580
Nov 96	370	2 790	2 150	1 680	2 010	6 510	580	160	20 580
Dec 96	610	3 690	5 710	3 380	2 420	5 840	1 330	400	29 830
Jan 97	420	2 930	1 290	2 520	570	960	500	280	13 050
Feb 97	350	2 610	5 600	2 750	2 690	3 110	730	190	22 380

(a) Total includes countries not listed in this table.

Reference: Unpublished table PMTWAT31 for monthly figures and PMTRO031 for financial year figures.

ANALYSIS OF TABLE 2.3

The number of short-term overseas visitor arrivals for holidays in Western Australia in February 1997 rose by 71% on January 1997. However, the total of 22,380 visitors was still 3% lower than 12 months ago.

February 1997 saw a large rise of 4,310 holidaymakers or 334% from Indonesia on January 1997. Arrivals from Malaysia rose by 2,120 persons or 372% whilst arrivals from Singapore rose by 2,150 persons or 224%. This repeated the pattern of 12 months ago. Holidaymakers from the United Kingdom and Ireland fell by 11% on January 1997.

Compared to February 1996, holidaymakers from New Zealand fell by 45%, Singapore by 28%, Indonesia 12% and Malaysia by 5%. Thailand rose by 59%, the United States by 36%, the United Kingdom and Ireland by 31% and Japan by 15%.

2.4

SHORT-TERM DEPARTURES OF RESIDENTS TO SELECTED DESTINATIONS(a)

COUNTRY OF DESTINATION.....

	New Zealand	UK & Ireland	Indonesia	Malaysia	Singapore	Total(a)
Financial Years						
1993-94	22 020	38 580	64 720	23 420	24 170	274 770
1994-95	25 750	40 850	68 420	23 070	25 840	292 270
1995-96	25 100	44 070	68 860	22 780	29 430	305 910
Months						
Dec 95	4 100	3 800	5 650	2 820	3 030	33 040
Jan 96	2 140	1 400	4 630	1 480	2 740	19 640
Feb 96	2 290	1 680	3 720	1 040	1 990	17 840
Mar 96	2 500	4 110	6 230	1 740	3 080	25 730
Apr 96	1 820	3 330	5 360	1 460	1 770	23 540
May 96	960	5 650	4 420	1 520	1 360	25 720
Jun 96	1 100	5 770	7 610	2 030	2 090	29 410
Jul 96	1 850	5 830	7 790	2 090	2 400	32 280
Aug 96	1 900	3 760	8 100	1 510	1 950	27 420
Sep 96	2 680	4 920	9 390	2 860	2 470	34 960
Oct 96	2 150	3 090	8 990	1 890	1 890	26 830
Nov 96	1 830	2 740	7 590	1 840	1 820	24 850
Dec 96	4 790	4 990	7 230	2 960	2 690	35 260
Jan 97	2 770	2 240	6 510	1 650	2 020	23 760
Feb 97	1 910	2 170	4 870	1 930	2 380	20 340

(a) Total includes countries not listed in this table.

Reference: Unpublished table PMT0013.

ANALYSIS OF TABLE 2.4

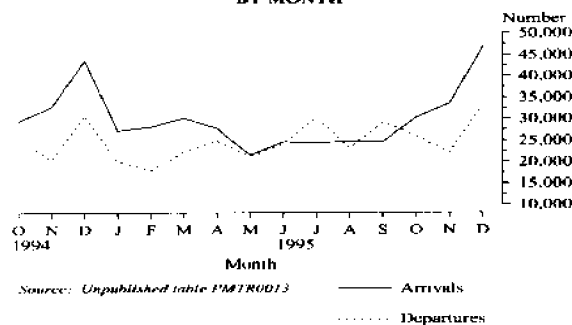
There was a fall of 3,420 persons or 14% in short-term departures of Australian residents from Western Australia in February 1997 from the previous month. The total of 20,340 persons was 2,500 persons or 14% higher than February 1996.

All destinations shown recorded decreases from January 1997 except Singapore which recorded a rise of 18% and Malaysia 17%. Short-term departures of residents to New Zealand fell by 31%, Indonesia by 25% and the United Kingdom and Ireland by 3%.

Compared to February 1996, short-term departures of Australian residents to Malaysia increased by 86%, Indonesia by 31%, the United Kingdom and Ireland by 29% and Singapore by 20%.

SHORT-TERM ARRIVALS OF OVERSEAS VISITORS AND DEPARTURES OF RESIDENTS BY MONTH

TOTAL SHORT TERM ARRIVALS OF OVERSEAS VISITORS AND DEPARTURES OF WESTERN AUSTRALIAN RESIDENTS BY MONTH



Source: Unpublished table PMTR0013

Source: Unpublished table PMTR0013

2.5

SHORT TERM DEPARTURES OF RESIDENTS BY AIR TO SELECTED DESTINATIONS - HOLIDAY

COUNTRY OF DESTINATION.....

	<i>New Zealand</i>	<i>UK & Ireland</i>	<i>Indonesia</i>	<i>Malaysia</i>	<i>Singapore</i>	<i>Thailand</i>	<i>United States</i>	<i>Total (a)</i>
Financial Years								
1993-94	9 420	15 080	53 670	12 480	12 160	11 690	9 100	150 490
1994-95	11 100	18 430	55 070	11 480	13 220	12 560	9 940	160 730
1995-96	10 120	18 420	53 060	10 430	15 670	12 750	9 650	160 120
Months								
Dec 95	1 480	1 320	4 170	1 480	1 320	800	1 260	16 060
Jan 96	890	750	3 250	520	1 140	530	820	9 660
Feb 96	820	380	2 340	440	810	580	370	7 800
Mar 96	1 070	1 580	4 520	580	1 910	820	760	13 000
Apr 96	840	1 540	3 620	610	950	1 400	640	11 980
May 96	350	2 690	3 310	460	630	710	690	12 330
Jun 96	300	2 440	6 330	890	1 110	1 230	930	16 640
Jul 96	960	3 020	6 680	1 040	1 320	1 080	1 720	19 110
Aug 96	700	2 060	6 710	870	860	860	780	16 080
Sep 96	840	2 190	8 340	1 500	1 020	1 150	1 110	20 830
Oct 96	1 070	1 710	7 330	790	1 340	1 250	460	15 990
Nov 96	640	950	6 100	1 000	1 010	500	450	12 620
Dec 96	1 790	1 970	6 430	1 510	1 420	490	1 260	18 950
Jan 97	1 060	740	5 240	830	900	560	500	11 980
Feb 97	830	580	3 680	620	1 020	650	150	9 260

(a) Total includes countries listed in this table.

Reference: Unpublished table PMTWAT31 for monthly figures and PMTR0031 for financial year figures.

ANALYSIS OF TABLE 2.5

There were 9,260 short-term departures from Western Australia of Australian residents for holidays abroad in February 1997, the second lowest recorded in 15 months. This is 2,720 residents or 23% less than departed in January 1997, but 1,460 residents or 19% more than departed in February 1996.

Compared with January 1997, departures of holidaymakers to the United States dropped by 70%, Indonesia 30%, Malaysia 25%, New Zealand by 22% and the United Kingdom and Ireland by 22%.

Indonesia remains Western Australia's favourite holiday destination. Of the total of 9,260 departures, 3,680 persons or 40% chose Indonesia as their holiday destination. Compared to February 1996, departures to Indonesia rose by 57% and by 53% to the United Kingdom and Ireland.

2.6 TOURIST ACCOMMODATION

HOTELS, MOTELS, GUEST HOUSES WITH FACILITIES..... CARAVAN PARKS.....

	Guest Rooms	Room occupancy rates	Guest arrivals	Number of sites	Site occupancy rates	Guest arrivals
	Number	%	'000	Number	%	'000
Financial Years(a)						
1993-94	14 754	57	2 154	29 202	39	1 250
1994-95	14 754	60	2 219	29 554	40	1 231
1995-96	15 085	60	2 256	29 952	40	1 299
Months						
Oct 95		63	240		39	112
Nov 95		59	194		35	72
Dec 95	14 924	51	197	30 063	38	105
Jan 96		52	203		45	131
Feb 96		57	179		37	73
Mar 96	14 928	58	198	30 085	37	85
Apr 96		59	187		41	125
May 96		56	171		37	89
Jun 96	15 085	55	167	29 952	40	98
Jul 96		57	193		46	151
Aug 96		61	207		45	164
Sep 96	15 396	68	235	29 990	44	153
Oct 96		67	232		38	116
Nov 96		61	195		36	79
Dec 96	15 996	54	193	30 105	40	111

HOLIDAY FLATS, UNITS, HOUSES..... VISITOR HOSTELS.....

	Guest units	Unit occupancy rates	Unit Lettings	Bed spaces	Bed occupancy Rates	Guest nights
	Number	%	'000	Number	%	'000
Financial Years(a)						
1993-94	2 224	55	96	3 119	38	416
1994-95	2 419	57	110	2 834	41	431
1995-96	2 687	57	134	3 171	43	478
Months						
Oct 95		66	13		44	41
Nov 95		55	11		42	38
Dec 95	2 581	61	12	3 033	43	40
Jan 96		73	12		47	46
Feb 96		58	11		44	40
Mar 96	2 414	59	13	2 794	45	44
Apr 96		64	12		46	44
May 96		43	10		41	40
Jun 96	2 687	46	10	3 171	41	39
Jul 96		57	11		40	39
Aug 96		48	10		36	36
Sep 96	2 705	60	13	3 172	39	37
Oct 96		63	14		39	38
Nov 96		54	12		41	38
Dec 96	2 797	61	13	3 109	41	39

(a) Number at 30 June

Reference: Tourist Accommodation WA (8635.5)

For more information regarding this table, please contact Pam Prince on (08) 9360 5207.

3.1

LABOUR FORCE STATUS (AGED 15 YEARS AND OVER): Seasonally Adjusted

	Employed full-time	Total employed	Total unemployed	Unemployment rate	Participation rate
Males					
Jun 96	425.7	477.4	43.0	8.3	76.3
Jul 96	432.1	481.4	40.7	7.8	76.4
Aug 96	426.1	481.3	43.3	8.3	76.6
Sep 96	426.0	480.4	41.9	8.0	76.1
Oct 96	430.3	484.0	42.8	8.1	76.6
Nov 96	429.9	480.3	41.9	8.0	75.8
Dec 96	428.5	483.7	41.3	7.9	76.1
Jan 97	434.3	491.4	36.7	7.0	76.4
Feb 97	435.9	491.2	38.4	7.3	76.5
Mar 97	433.0	490.2	37.4	7.1	76.1
Apr 97	434.6	490.4	36.2	6.9	75.8
Females					
Jun 96	195.2	356.2	29.3	7.6	56.0
Jul 96	197.3	360.9	29.1	7.5	56.5
Aug 96	201.4	367.9	28.6	7.2	57.4
Sep 96	200.1	365.3	27.3	7.0	56.7
Oct 96	194.3	360.8	27.4	7.1	55.9
Nov 96	195.3	364.0	27.8	7.1	56.3
Dec 96	197.6	366.5	29.6	7.5	56.8
Jan 97	194.8	364.5	33.4	8.4	57.0
Feb 97	189.7	366.5	32.3	8.1	57.0
Mar 97	187.8	359.4	31.6	8.1	55.8
Apr 97	191.7	356.8	31.5	8.1	55.4
Persons					
Jun 96	620.9	833.6	72.4	8.0	66.1
Jul 96	629.3	842.3	69.8	7.6	66.4
Aug 96	627.6	849.2	71.9	7.8	66.9
Sep 96	626.1	845.7	69.2	7.6	66.3
Oct 96	624.6	844.8	70.2	7.7	66.2
Nov 96	625.2	844.3	69.7	7.6	66.0
Dec 96	626.0	850.2	70.9	7.7	66.4
Jan 97	629.1	855.9	70.1	7.6	66.7
Feb 97	625.6	857.7	70.8	7.6	66.7
Mar 97	620.8	849.6	69.0	7.5	65.9
Apr 97	626.3	847.3	67.8	7.4	65.5

Reference : The Labour Force, Australia Preliminary (6202.0)

ANALYSIS OF TABLE 3.1

The seasonally adjusted unemployment rate decreased by 0.1 percentage points to 7.4% in April 1997.

The seasonally adjusted number of persons unemployed decreased by 1,200 to 67,800 while the number of persons employed decreased by 2,300 to 847,300.

Western Australia's seasonally adjusted participation rate for April 1997 decreased by 0.4 percentage points to 65.5% and continues to be the highest of all the States.

3.2 LABOUR FORCE STATUS (AGED 15 YEARS AND OVER): Trend

	Employed full-time	Total employed	Total unemployed	Unemployment rate	Participation rate
	'000	'000	'000	%	%
Males					
Jun 96	427.2	479.2	41.7	8.0	76.4
Jul 96	427.5	479.9	42.1	8.1	76.4
Aug 96	427.7	480.5	42.4	8.1	76.4
Sep 96	428.1	481.2	42.5	8.1	76.3
Oct 96	428.8	482.3	42.1	8.0	76.3
Nov 96	429.9	483.8	41.3	7.9	76.3
Dec 96	431.2	485.7	40.2	7.6	76.2
Jan 97	432.5	487.7	39.1	7.4	76.2
Feb 97	433.6	489.5	38.0	7.2	76.2
Mar 97	434.4	490.8	37.1	7.0	76.2
Apr 97	434.9	491.7	36.4	6.9	76.0
Females					
Jun 96	196.6	358.0	28.0	7.3	56.1
Jul 96	197.5	360.5	28.1	7.2	56.3
Aug 96	198.1	362.7	28.1	7.2	56.5
Sep 96	198.3	364.4	28.1	7.1	56.6
Oct 96	197.8	365.1	28.3	7.2	56.7
Nov 96	196.5	365.1	29.0	7.4	56.7
Dec 96	194.8	364.7	30.0	7.6	56.6
Jan 97	193.2	364.0	31.0	7.8	56.6
Feb 97	191.8	362.9	31.7	8.0	56.5
Mar 97	190.6	361.6	32.3	8.2	56.2
Apr 97	189.9	360.3	32.5	8.3	56.0
Persons					
Jun 96	623.8	837.2	69.8	7.7	66.2
Jul 96	624.9	840.4	70.2	7.7	66.3
Aug 96	625.8	843.2	70.5	7.7	66.4
Sep 96	626.5	845.5	70.5	7.7	66.4
Oct 96	626.6	847.4	70.4	7.7	66.4
Nov 96	626.3	849.0	70.3	7.6	66.4
Dec 96	626.0	850.4	70.2	7.6	66.4
Jan 97	625.7	851.7	70.1	7.6	66.4
Feb 97	625.4	852.4	69.8	7.6	66.3
Mar 97	625.1	852.5	69.4	7.5	66.2
Apr 97	624.8	852.1	68.9	7.5	66.0

Reference: Labour Force, Australia Preliminary (5202.0)

ANALYSIS OF TABLE 3.2

Trend estimates for October 1996 to March 1997 have been revised.

The trend estimate of the unemployment rate remained the same at 7.5%.

For more information regarding these tables, please contact Lesley Martin on (08) 9360 5320.

3.4 INDUSTRIAL DISPUTES CAUSING STOPPAGE OF WORK

WORKERS INVOLVED.....

	<i>Number of Disputes</i>	<i>Directly</i>	<i>Indirectly</i>	<i>Total</i>	<i>Working days lost</i>
	Number	'000	'000	'000	'000
Calendar Year					
1993	111	27.4	0.2	27.6	29.5
1994	82	15.7	0.2	15.9	27.4
1995	70	99.7	0.0	99.7	101.6
Months					
Dec 95	3	0.4	—	0.4	0.2
Jan 96	4	1.5	—	1.5	12.4
Feb 96	9	4.0	—	4.0	3.9
Mar 96	3	0.9	—	0.9	1.0
Apr 96	5	1.1	—	1.1	1.4
May 96	8	10.0	—	10.0	9.9
Jun 96	1	4.4	—	4.4	4.4
Jul 96	4	2.1	—	2.1	1.8
Aug 96	6	10.2	—	10.2	8.5
Sep 96	6	3.0	—	3.0	1.6
Oct 96	6	3.0	—	3.3	1.7
Nov 96	8	1.3	—	1.3	0.9
Dec 96	2	159.0	—	159.0	43.0
Jan 97	4	1 332.0	106.0	1 438.0	15 487.0
Feb 97	5	1 286.0	—	1 286.0	2 386.0

Reference: Industrial Disputes, Unpublished ABS Data

4.1

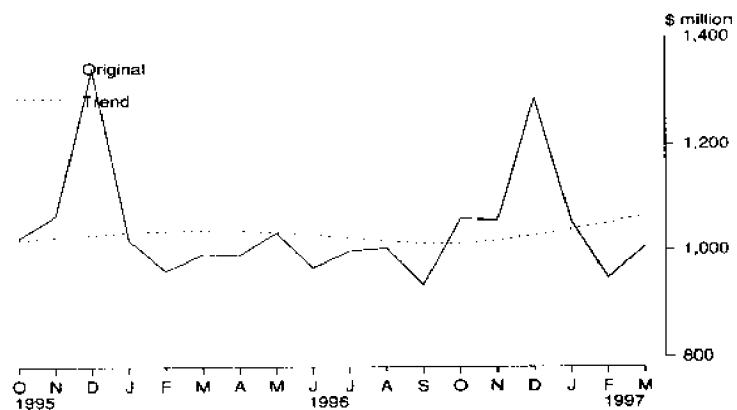
MONTHLY RETAIL TURNOVER: Original

	Food	Department stores	Clothing and soft goods	Other household goods	Recreational goods
	\$m	\$m	\$m	\$m	\$m
Mar 96	445.0	82.5	55.4	101.0	53.0
Apr 96	423.7	91.6	62.5	102.1	55.9
May 96	436.6	99.9	69.6	108.3	57.5
Jun 96	400.6	90.3	67.5	108.0	50.5
Jul 96	420.5	93.6	64.7	127.7	53.4
Aug 96	431.1	94.2	60.7	130.6	52.1
Sep 96	406.6	82.2	55.9	111.5	51.2
Oct 96	445.0	101.3	68.4	138.8	55.6
Nov 96	442.0	109.6	67.0	138.2	53.0
Dec 96	501.1	176.8	88.1	163.7	68.2
Jan 97	468.6	86.4	62.2	145.7	51.1
Feb 97	422.1	76.2	48.3	127.6	46.9
Mar 97	459.6	89.1	54.5	125.7	47.8

	Hospitality and services	Other	Original	Seasonally adjusted	Trend estimates
	\$m	\$m	\$m	\$m	\$m
Mar 96	175.3	80.5	992.7	1 040.8	1 038.8
Apr 96	164.6	89.6	990.0	1 034.5	1 037.7
May 96	162.3	98.4	1 032.6	1 037.7	1 034.2
Jun 96	158.5	92.6	968.0	1 026.3	1 029.3
Jul 96	150.6	88.5	999.0	1 018.0	1 023.2
Aug 96	151.8	84.0	1 004.5	1 049.7	1 016.8
Sep 96	146.5	81.0	934.9	969.3	1 012.7r
Oct 96	154.3	94.6	1 058.0	1 035.0	1 013.4r
Nov 96	153.3	94.3	1 057.4	1 017.1	1 019.3r
Dec 96	168.4	121.1	1 287.4	994.5	1 028.9r
Jan 97	156.6	83.8	1 054.4	1 066.0	1040.1r
Feb 97	143.8	82.8	947.7	1 064.5	1 051.2r
Mar 97	152.6	77.5	1 006.8	1 054.7	1 066.3

Reference: Retail Trade, Australia (8501.0)

MONTHLY RETAIL TURNOVER, WESTERN AUSTRALIA



Source: Retail Trade, Australia (8501.0)

5.1

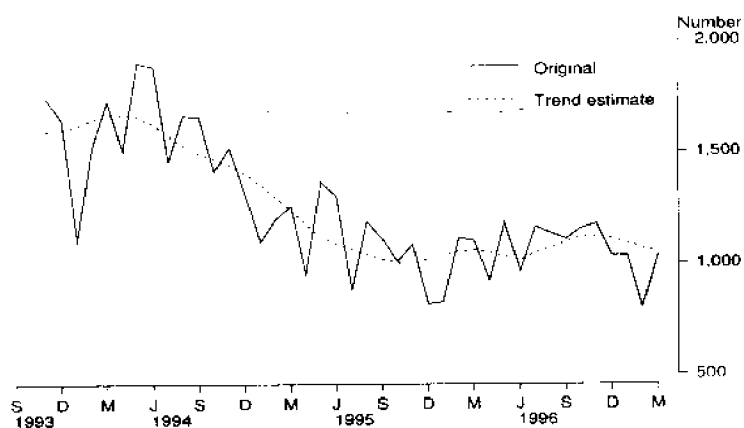
NEW RESIDENTIAL BUILDING APPROVED

	HOUSES.....		OTHER RESIDENTIAL BUILDINGS.....		TOTAL (a).....	
	Dwelling Units	Value	Dwelling Units	Value	Dwelling Units	Value
	No.	\$m	No.	\$m	No.	\$m
Financial years						
1993-94	19 437	1 503.7	7 144	461.0	26 776	1 964.7
1994-95	16 207	1 354.3	6 105	420.3	22 427	1 774.6
1995-96	12 211	1 148.3	3 527	272.3	15 853	1 420.7
Months						
Jan 96	827	82.5	410	33.2	1 241	115.7
Feb 96	1 115	105.1	342	25.5	1 482	130.6
Mar 96	1 101	104.5	362	33.7	1 501	138.2
Apr 96	922	90.9	244	17.3	1 189	108.1
May 96	1 183	114.3	227	15.0	1 420	129.2
Jun 96	966	94.0	227	15.3	1 195	109.3
Jul 96	1 165r	107.3r	166r	10.9r	1 336r	118.2r
Aug 96	1 134r	110.4r	136r	11.1r	1 277r	121.4r
Sep 96	1 108r	108.2r	127r	9.0r	1 245r	117.2r
Oct 96	1 157r	111.0r	204r	15.9r	1 376r	126.9r
Nov 96	1 175r	112.6r	187r	15.2r	1 366r	127.8r
Dec 96	1 035r	102.4r	194r	18.1r	1 242r	120.5r
Jan 97	1 034	103.4	135	15.6	1 182	119.0
Feb 97	803	80.2	238	21.1	1 047	101.3
Mar 97	1 039	108.7	165	17.1	1 216	125.8

(a) Includes conversions

Reference: Building Approvals, Western Australia (8731.5)

NEW HOUSES APPROVED, WESTERN AUSTRALIA



Source: Building Approvals, Western Australia (8731.5)

For more information regarding this table, please contact
Phil Smythe on (08) 9360 5180.

5.2

NON-RESIDENTIAL BUILDING APPROVED

	<i>Private</i>	<i>Public</i>	<i>Total</i>
	\$m	\$m	\$m
Financial Years			
1993-94	513.1	153.9	667.0
1994-95	580.9	147.3	728.2
1995-96	692.0	111.1	803.1
Months			
Jan 96	86.9	21.3	108.2
Feb 96	41.3	7.3	48.6
Mar 96	35.5	21.4	56.9
Apr 96	60.8	5.7	66.5
May 96	103.4	14.0	117.4
Jun 96	62.1	10.0	72.1
Jul 96	63.9	8.7	72.6
Aug 96	71.7	61.7	133.4
Sep 96	74.1	17.8	91.9
Oct 96	114.6	26.4	141.0
Nov 96	54.9	110.1	165.0
Dec 96	39.0	7.4	46.4
Jan 97	31.7	35.0	66.7
Feb 97	73.6	44.2	117.8
Mar 97	68.3	22.1	90.4

Reference: Building Approvals, Western Australia (8731.5)

For more information regarding this table, please contact
Phil Smythe on (08) 9360 5180.

5.3

SELECTED HOUSING PRICE INDEXES: PERTH

	<i>Materials used in house building</i>	<i>Established homes</i>	<i>Project homes</i>
Financial Years			
1993-94	109.1	104.7	96.2
1994-95	112.7	109.0	100.0
1995-96	114.7	108.2	101.6
Quarters			
Sep 95	115.0	108.6	102.2
Dec 95	114.9	108.3	101.6
Mar 96	114.6	107.5	101.3
Jun 96	114.6	108.2	101.4
Sep 96	115.0	108.0	101.5
Dec 96	115.0	107.5	101.4

Base of each index: 1989-90 = 100.0

References: Price Index of Materials used in House Building (6408.0);
House Price Indexes (6416.0)

5.4

PRICE INDEX OF MATERIALS USED IN BUILDING OTHER THAN HOUSE BUILDING, PERTH

SPECIAL SERIES.....

	<i>All Groups</i>	<i>Electrical materials</i>	<i>Mechanical services</i>	<i>Plumbing</i>
Financial years				
1993-94	107.1	101.9	104.2	105.1
1994-95	110.1	107.3	106.8	114.4
1995-96	113.2	113.0	112.3	120.1
Months				
Jan 96	113.3	112.5	112.4	120.0
Feb 96	113.4	112.5	112.9	120.0
Mar 96	113.4	112.8	113.4	119.7
Apr 96	113.5	113.5	114.4	118.9
May 96	113.6	114.0	114.5	120.3
Jun 96	113.5	113.9	114.6	120.4
Jul 96	113.9	112.6	114.3	117.3
Aug 96	114.0	110.3	114.1	117.4
Sep 96	114.2	110.2	113.5	117.9
Oct 96	114.3	110.2	113.8	117.0
Nov 96	114.1	109.4	112.6	117.4
Dec 96 p	114.4	109.6	112.7	119.0
Jan 97 p	114.6	110.3	113.3	119.1
Feb 97 p	115.1	110.3	113.4	120.1
Mar 97 p	115.1	111.5	112.9	120.5

SELECTED MAJOR BUILDING MATERIALS.....

	<i>Structural timber</i>	<i>Clay bricks</i>	<i>Ready mixed concrete</i>	<i>Structural steel</i>	<i>Aluminium windows</i>
Financial years					
1993-94	110.6	113.9	116.6	100.4	104.4
1994-95	110.6	118.0	117.8	103.6	112.4
1995-96	109.3	120.7	115.0	107.5	118.1
Months					
Jan 96	109.2	120.2	114.4	108.2	118.2
Feb 96	109.1	120.2	114.1	108.2	118.2
Mar 96	109.1	120.2	114.1	108.2	118.2
Apr 96	108.6	120.2	114.7	108.2	118.2
May 96	108.6	123.4	114.7	108.8	118.2
Jun 96	108.6	123.4	114.7	108.8	116.4
Jul 96	108.6	123.4	119.8	108.8	116.4
Aug 96	105.9	123.4	119.5	109.7	116.4
Sep 96	105.9	123.6	119.4	111.2	116.4
Oct 96	105.7	123.6	119.4	111.2	116.4
Nov 96	105.6	123.6	119.6	113.4	116.4
Dec 96 p	105.6	123.6	119.6	115.7	116.4
Jan 97 p	105.6	123.6	119.6	116.0	116.4
Feb 97 p	107.4	123.6	121.8	116.1	116.4
Mar 97 p	107.6	123.6	121.7	116.1	116.4

Base of each index 1989-90 = 100.0

Reference: Price Index of Materials Used in Building Other than House Building (6407.0)

6.1

LIVESTOCK SLAUGHTERED

	CATTLE.....			OTHER.....			
	<i>Bulls, bullocks, steers</i>	<i>Cows, heifers</i>	<i>Total (excluding calves)</i>	<i>Calves</i>	<i>Sheep</i>	<i>Lambs</i>	<i>Pigs</i>
Financial Years							
1993-94	271	168	439	4	2 952	1 553	550
1994-95	244	186	430	4	2 438	1 264	604
1995-96 p	233	192	426	3	2 267	1 303	571
Months							
Feb 96	18r	22r	41r	-	186r	102r	46r
Mar 96	17r	16r	33r	-	184r	123r	48r
Apr 96	15r	12r	28r	-	174r	128r	46r
May 96	16r	13r	29r	-	197r	155r	51
Jun 96	15r	11r	26r	-	158r	131r	44r
Jul 96	13r	12r	25r	-	166r	159r	49
Aug 96	14r	15	29r	-	186r	137r	44
Sep 96	17r	17	33r	1	202r	166r	43
Oct 96	20r	20r	40r	-	235r	218r	39r
Nov 96	20	20	40	-	194r	157r	45r
Dec 96	20r	20	40r	-	186r	129r	47r
Jan 97	20	21	41	-	174r	124r	43
Feb 97	17r	21r	38r	-	172r	157r	46r
Mar 97	15	18	33	-	174	149	50

Reference: Livestock Products (7215.0)

6.2

MEAT PRODUCED

	<i>Beef</i>	<i>Veal</i>	<i>Mutton</i>	<i>Lamb</i>	<i>Pigmeat</i>
Financial Years					
1993-94	101 513	296	61 731	24 936	32 423
1994-95	97 140	250	47 776	18 955	37 109
1995-96 p	97 059	187	44 737	22 171	35 437
Months					
Feb 96	9588r	16r	3743r	1831r	2901r
Mar 96	7958r	14r	3730r	2204r	3001r
Apr 96	6853r	13r	3492r	2267r	2899r
May 96	6906r	16r	4057r	2695r	3 225r
Jun 96	6354r	21r	3162r	2328r	2 754r
Jul 96	5731r	23r	3299r	2698r	2892r
Aug 96	6731r	23r	3693r	2 352r	2 913r
Sep 96	7907r	29r	3956r	2 834r	2 991r
Oct 96	9 456r	24r	4676r	3595r	2919r
Nov 96	9416r	25r	3928r	2644r	3165r
Dec 96	8941r	27r	3670r	2226r	3261r
Jan 97	9 291r	23r	3404r	2161r	3 095r
Feb 97	8512r	21r	3318r	2782r	3 310r
Mar 97	7 625	21	3 367	2 627	3 555

Reference: Livestock Products (7215.0)

For more information regarding these tables, please contact
Peter Hodgson on (08) 9360 5180.

6.3

WOOL RECEIVALS(a) AND LIVE SHEEP EXPORTS

	RECEIVALS OF TAXABLE WOOL BY BROKERS AND DEALERS.....		EXPORT OF LIVE SHEEP.....		
	Bales	Tonnes	Quantity '000	Gross Value \$'000	Gross Weight '000t
Financial Years					
1993-94	1 196 990	212 670	4524.1r	127 564	238.0
1994-95	972 837	172 575	3 871.4	127974r	193.3r
1995-96	931 048	165 842	4 690.6	181 069	232.3
Months					
Jan 96	62 665	11 173	389.8	15 782	20.1
Feb 96	93 367	16 748	361.1	14 234	18.5
Mar 96	92 096	16 422	518.1	19 863	26.5
Apr 96	71 694	12 719	306.8	11 183	15.8
May 96	52 751	9 326	523.2	17 453	26.2
Jun 96	24 310	4 284	236.2	8 320	10.3
Jul 96	53 329	9 510	209.4	7 540	10.3
Aug 96	99 902	17 933	262.2	9 613	12.4
Sep 96	121 600	21 734	437.7	16 378	21.9
Oct 96	121 626	21 541	466.8	17 067	24.3
Nov 96	84 634	14 957	329.2	11 537	17.2
Dec 96	36 120	6 317	274.3	9 372	13.9
Jan 97	63 618	11 321	354.4	12 425	19.2
Feb 97	82 466	14 611	336.7	10 999	17.4
Mar 97	n.y.a	n.y.a.	386.6	13 379	19.2

(a) Source: National Council of Wool Selling Brokers

Reference: FTRACCS Trade Statistics

6.4

ENERGY PRODUCTION

	Coal(a)	Electricity generated	Gas for distribution(b)	Crude oil(c)(d)	Natural gas(d)
	'000 tonnes	million kWh	million MJ	mega-litres	million m ³
Financial Years					
1993-94	5 151	15 755	172 432	7 639	13 659
1994-95	5 882	16 756	186 658	12 680	15 714
1995-96	5 897	17 422	181 710	9 676	16 766
Months					
Mar 96	588	1 514	16 638	3 708	4 136
Apr 96	413	1 366	15 305		
May 96	487	1 475	16 609		
Jun 96	569	1 456	16 614	4 204	4 208
Jul 96	379	1 523	17 292		
Aug 96	414	1 473	17 097		
Sep 96	469	1 379	15 454	4 187	4 115
Oct 96	517	1 412	15 558		
Nov 96	584	1 328	17 457		
Dec 96	446	1 401	17 883	n.y.a.	n.y.a.
Jan 97	448	1 463	17 659		
Feb 97	469	1 362	15 408		
Mar 97	561	1 331	17 201	n.y.a.	n.y.a.

(a) Department of Minerals and Energy

(b) Available for issue through mains

(c) Includes condensate

(d) Source: Australian Bureau of Agriculture and Resource Economics

For more information regarding these tables, please contact

Pam Prince on (08) 9360 5207.

6.5

MINERAL EXPLORATION: EXPENDITURE BY TYPE OF MINERAL SOUGHT

	METALLIC MINERALS.....			NON-METALLIC MINERALS....		
	Base metals(a)	Gold	Other	Diamonds	Other	Total minerals
	\$m	\$m	\$m	\$m	\$m	\$m
Financial Years						
1993-94	63.3	310.2	31.5	46.6	2.1	453.7
1994-95	58.8	379.4	17.9	35.2	5.6	495.5
1995-96	89.0	367.8	6.9	33.8	6.0	519.5
Months						
Sep 95	16.6	90.4	4.5	9.7	2.4	124.9
Dec 95	17.5	100.0	4.8	7.4	1.1	128.9
Mar 96	21.8	83.9	n.a.	4.9	2.1	117.8
Jun 96	32.3	93.4	n.a.	11.7	1.6	147.0
Sep 96	23.6	120.2	0.8	8.8	1.4	162.8
Dec 96	20.1	147.9	n.a.	11.5	n.a.	187.7

(a) Includes copper, lead, zinc, silver, nickel and cobalt.

Reference: Actual and Expected Private Mineral Exploration Expenditure, Australia (8412.0)

6.6

MINERAL PRODUCTION

	Iron ore	Bauxite	Gold	Ilmenite	Nickel	Diamonds
	'000 tonnes	'000 tonnes	kg	'000 tonnes	'000 tonnes	'000 carats
Financial Years						
1993-94	119 690	27 087	193 599	1 612	62	39 909
1994-95	132 742	26 852	187 280	1 631	94	43 591
1995-96	143 392	28 250	205 830	1 871	105	42 517
Months						
Jun 95	34 738	6 729	47 000	433	27	9 324
Sep 95	36 459r	7 451	48 765	500	25	9 105
Dec 95	35 213r	7 028	48 675	477	24	12 153
Mar 96	35 890r	6 946	53 100	417	26	11 473
Jun 96	35 830	6 825	55 946	477	30	19 835
Sep 96	36 821	6 865	53 836	464	28	11 235

Source: Australian Bureau of Agricultural and Resource Economics

For more information regarding these tables, please contact
Pam Prince on (08) 9360 5207.

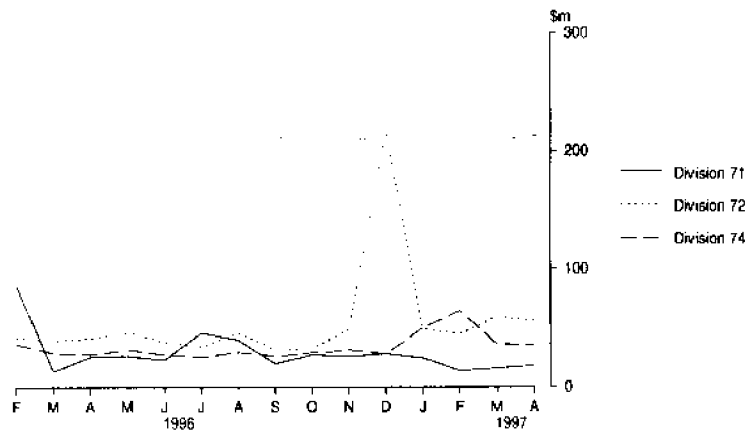
7.1

IMPORTS BY SELECTED DIVISIONS

	33 Petroleum, petroleum products, etc	71 Power generating equipment and machinery	72 Machinery specialised for particular industries	74 General industrial machinery and equipment	78 Road vehicles
	\$m	\$m	\$m	\$m	\$m
Financial Years					
1993-94	678.4	189.7	432.2	254.0	690.0
1994-95	823.8	203.1	436.9	308.0	802.1
1995-96	768.9	356.1	510.3	345.7	794.5
Months					
Feb 96	72.8	85.5	41.8	36.4	53.8
Mar 96	74.2	13.5	39.6	28.7	60.0
Apr 96	56.4	25.6	41.9	27.8	62.5
May 96	69.9	26.5	46.6	32.2	74.6
Jun 96	47.6	23.0	38.5	27.2	72.1
Jul 96	115.1	46.2	34.0	25.8	70.7
Aug 96	92.7	40.2	46.3	29.8	74.3
Sep 96	39.2	20.0	31.9	26.3	63.0
Oct 96	107.3	27.5	33.0	29.7	81.0
Nov 96	66.2	26.3	49.0	31.7	73.2
Dec 96	126.6	28.3	217.8	27.8	66.6
Jan 97	109.8	24.7	49.4	50.4	61.3
Feb 97	118.0	13.9	45.3	35.7	57.4
Mar 97	36.2	16.3	59.5	36.5	63.4
Apr 97	44.4	18.6	55.9	64.9	66.7

Reference: Fastraccs Trade Statistics

IMPORTS BY SELECTED DIVISION



Source: Fastraccs Trade Statistics

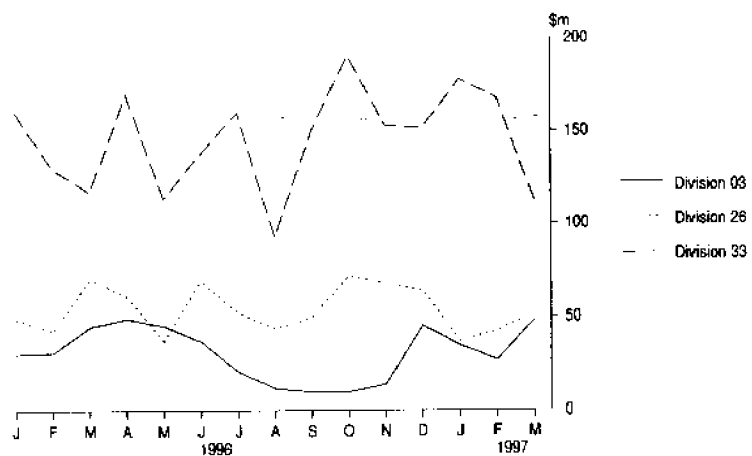
7.2

EXPORTS BY SELECTED DIVISIONS

	03 <i>Fish, crustaceans, molluscs, etc</i>	04 <i>Cereals and cereal preparations</i>	26 <i>Textile fibres and waste (excluding yarn or fabric)</i>	28 <i>Metalliferous ores and metal scrap</i>	33 <i>Petroleum, petroleum products etc.</i>
	\$m	\$m	\$m	\$m	\$m
Financial Years					
1993-94	413.3	1 150.1	656.1	2 999.4	882.9
1994-95	408.6	1 154.3	733.8	3 094.0	1 544.4
1995-96	364.2	1 874.9	692.6	3 221.8	1 586.0
Months					
Jan 96	30.4	213.7	49.2	246.0	160.6
Feb 96	31.1	197.6	42.8	233.6	130.3
Mar 96	45.1	185.3	70.8	275.5	117.5
Apr 96	49.6	177.7	61.5	251.6	170.0
May 96	45.5	161.9	37.5	259.7	114.4
Jun 96	37.2	153.5	69.6	314.8	138.2
Jul 96	21.2	121.5	52.4	299.8	160.4
Aug 96	12.0	104.4	44.2	295.8	92.9
Sep 96	10.0	113.1	49.9	289.9	150.0
Oct 96	10.0	120.5	72.4	278.4	190.8
Nov 96	14.1	90.5	67.7	273.4	152.9
Dec 96	45.6	177.9	64.2	271.5	151.9
Jan 97	34.8	201.3	37.2	280.4	177.8
Feb 97	27.1	146.7	42.8	275.6	168.1
Mar 97	48.8	207.2	51.9	321.2	113.0

Reference: Fastracks Trade Statistics

EXPORTS BY SELECTED DIVISION



Source: Fastracks trade statistics

8.1

NEW MOTOR VEHICLE REGISTRATIONS(a)

	Passenger vehicles	Light commercial vehicles	Trucks and buses	Motorcycles and scooters	Total(a)	Perth Statistical Division(a)
Financial Years						
1993-94	48 589	10 350	2 136	2 103	63 178	49 074
1994-95	51 947	10 782	2 170	2 344	67 243	52 168
1995-96	51 134	10 838	2 315	2 440	66 727	51 390
Months						
Feb 96	4 516	1 090	158	170	5 764r	4 377r
Mar 96	4 718	995	174	201	5 887r	4 498r
Apr 96	4 109	804	145	230	5 058r	3 882r
May 96	4 889	1 139	204	198	6 232r	4 979r
Jun 96	4 590	1 199	223	157	6 012r	4 546r
Jul 96	4 580	895	201	174	5 676r	4 483r
Aug 96	4 728	839	177	216	5 744r	4 623r
Sep 96	4 392	748	177	183	5 317r	4 331r
Oct 96	5 209	874	168	238	6 251r	4 977r
Nov 96	4 656	819	186	368	5 661r	4 455r
Dec 96	4 861	859	181	228	5 901r	4 584r
Jan 97	4 436	802	129	196	5 362r	4 222r
Feb 97	4 760	989	186	205	5 935	4 587
Mar 97	4 167	874	161	213	5 202	3 966

(a) Excludes motorcycles, plant and equipment, caravans and trailers.

Reference: Unpublished statistics

8.2

VEHICLE REGISTRATION STATISTICS(a)

	PASSENGER VEHICLES.....		OTHER VEHICLES.....		TOTAL.....	
	Original	Trend Estimate	Original	Trend Estimate	Original	Trend Estimate
	Months					
Feb 96	4 516	4 308	1 248	1 107	5 764	5 415
Mar 96	4 718	4 435	1 169	1 119	5 887	5 554
Apr 96	4 109	4 544	949r	1 131	5 058r	5 675
May 96	4 889	4 616	1 343	1 142	6 232r	5 758
Jun 96	4 590	4 647	1 422	1 145	6 012	5 792
Jul 96	4 580	4 643	1 096	1 132	5 676	5 775
Aug 96	4 728	4 635	1 016	1 108	5 744	5 743
Sep 96	4 392	4 655	925	1 077	5 317	5 732
Oct 96	5 209	4 681	1 042r	1 048	6 251r	5 729
Nov 96	4 656	4 703	1 005	1 030	5 661	5 733
Dec 96	4 861	4 723	1 040	1 024	5 901	5 747
Jan 97	4 436	4 733	926	1 026	5 362	5 759
Feb 97	4 760	4 718	1 175	1 096	5 935	5 814
Mar 97	4 167	4 691	1 035	1 115	5 202	5 806

(a) Excludes motorcycles, plant and equipment, caravans and trailers.

Reference: Unpublished statistics

For more information regarding these tables, please contact
Cheryl Smith on (08) 9360 5242.

9.1

PRIVATE NEW CAPITAL EXPENDITURE BY SELECTED INDUSTRY GROUPS:Original

	SELECTED INDUSTRY.....			TOTAL.....	
	<i>Mining</i>	<i>Manufacturing</i>	<i>Other selected industries</i>	<i>Original</i>	<i>Seasonally adjusted</i>
Financial Years					
1994-95	4 046	595	2 216	6 857	6 856
1995-96	4 199	958	2 422	7 579	7 576
Quarters					
Sep 95	1 046	200	562	1 808	1 870
Dec 95	1 173	174	760	2 107	1 797
Mar 96	915	205	542	1 663	1 917
Jun 96	1 064	379	558	2 001	1 992
Sep 96	888	155	479	1 522	1 580
Dec 96	1 060	155	548	1 763	1 520

Reference: State Estimates of Private New Capital Expenditure (5646.0)

9.2

STATE FINAL DEMAND AND PRODUCTION ACCOUNT TREND DATA AT CURRENT PRICES

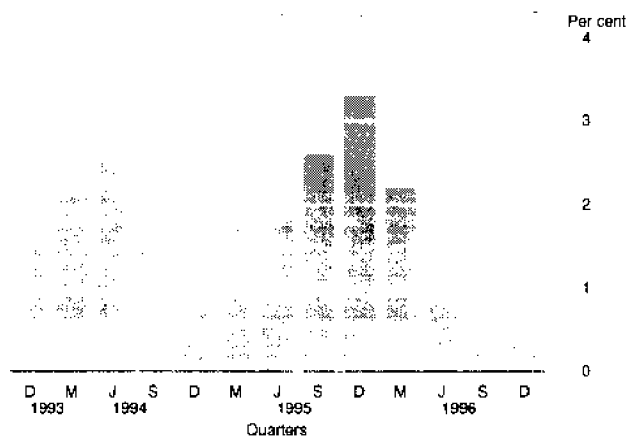
	<i>Wages, salaries and supplements</i>	<i>Gross operating surplus</i>	<i>Indirect taxes less subsidies</i>	<i>GSP (income based)</i>
	\$m	\$m	\$m	\$m
Months				
Jun 94	5 083	5 113	1 299	11 495
Sep 94	5 136	5 288	1 323	11 747
Dec 94	5 215	5 396	1 312	11 923
Mar 95	5 319	5 503	1 304	12 126
Jun 95	5 405	5 599	1 335	12 339
Sep 95	5 501	5 752	1 405	12 658
Dec 95	5 609	5 989	1 472	13 070
Mar 96	5 709	6 165	1 487	13 361
Jun 96	5 791	6 226	1 466	13 483
Sep 96	5 860	6 239	1 446	13 545
Dec 96	5 920	6 244	1 437	13 601

Reference: State Accounts (5242.0)

ANALYSIS OF TABLE 9.2

GSP grew by a modest 0.4% in the December quarter, continuing a pattern of declining growth evident over the previous three quarters. Growth through the year to December quarter 1996 was 4.1%. Wages, salaries and supplements grew by 1.0% in the December quarter to be 5.5% higher than in the same quarter of the previous year. Gross operating surplus increased by 0.1% in the December quarter following similarly weak growth in the September quarter. Modest growth of 4.3% was achieved through the year to December quarter 1996. Indirect taxes less subsidies fell in each of the last three quarters, with the December quarter declining by 0.6%. A fall of 2.4% was recorded through the year to December quarter 1996.

PERCENTAGE CHANGE IN GSP(a) - TREND



(a) Gross State Product at current prices

Source: State Accounts (5242.0)

WESTERN AUSTRALIA.....

Indicator	Period	Unit	Current Australian Figure	Current figure	Change from last period (%)	Figure one year ago	Change from one year ago(%)
Population							
Estimated resident population	Sep qtr 96 p	'000	18 348.7	1 771.0	0.5	1 739.5	1.8
Natural increase	Sep qtr 96 p	No.	27 850.0	3 108.0	-15.0	3 399.0	-8.6
Tourism							
<i>Hotels and motels, etc with facilities</i>							
Guest arrivals	Dec qtr 96	'000	8 091.8	619.5	-2.5	594.9	4.1
Guest rooms available	Dec qtr 96	No.	173 876	15 996	3.9	14 924	7.2
Room occupancy rates	Dec qtr 96	%	59.9	60.3	-2.7	62.2	-3.1
<i>Overseas visitors</i>							
Short-term arrivals	Feb 97	No.	407 960	39 350	32.8	39 640	-0.7
Long-term arrivals	Feb 97	No.	19 720	2 700	45.9	2 530	6.7
<i>Resident Departures</i>							
Short-term departures	Feb 97	No.	180 220	20 340	-14.4	17 840	14.0
Long-term departures	Feb 97	No.	6 700	710	-36.6	730	-2.7
Employment							
<i>Employed persons</i>							
Trend	Apr 97	'000	8 413.0	852.1	0.0	831.0	2.5
<i>Unemployed persons</i>							
Looking for work (Trend)	Apr 97	'000	804.3	68.9	-0.7	69.0	-0.1
<i>Participation rate</i>							
Trend	Apr 97	%	63.5	65.0	-0.3	65.9	0.2
<i>Unemployment rate</i>							
Trend	Apr 97	%	8.7	7.5	0.0	7.7	-2.6
<i>Full-time adult average weekly earnings</i>							
Males	Nov 96	\$	774.40	804.80	-0.1	776.20	3.7
Females	Nov 96	\$	614.20	559.00	1.1	568.70	4.6
Persons	Nov 96	\$	716.90	728.70	0.3	702.90	3.7
Retail							
<i>Monthly retail turnover</i>							
Original	Mar 97	\$m	10 032.0	1 006.8	6.2	992.7	1.4
Trend estimate	Mar 97	\$m	10 489.5	1 066.3	1.4	1 038.8	2.6
Construction							
<i>Building Approvals</i>							
Dwelling Units	Mar 97	No	11 368	1 216	16.7	1 501	-19.0
Value of all building	Mar 97	\$m	1 840.0	231.1	-0.1	210.0	10.0
<i>Housing Price Indexes</i>							
Materials used in house building	Dec 96	Index No.	115.9	115.0	0.0	114.6	0.3
Established houses	Dec qtr 96	Index No.	114.3	107.5	-0.5	108.3	-0.7
Project homes	Dec qtr 96	Index No.	109.1	101.4	-0.1	101.6	-0.2
Mineral Exploration							
Gold	Dec qtr 96	\$m	201.9	147.9	23.0	100.0	47.9
Other minerals	Dec qtr 96	\$m	107.6	39.8	-6.6	28.9	37.7
Overseas Trade							
Imports	Apr 97	\$m	6 766.7	578.0	19.4	477.9	20.9
Exports	Mar 97	\$m	6 924.5	1 697.9	7.4	1 630.1	4.2
Transport							
<i>Passenger vehicle registrations</i>							
Original	Mar 97	No.	49 164	4 167	-12.4	4 718	-11.7
Trend	Mar 97	No.	46 374	4 691	-0.6	4 435	5.8
<i>Total registrations</i>							
Original	Mar 97	No.	58 382	5 202	-12.4	5 887	-11.6
Trend	Mar 97	No.	54 972	5 806	-0.1	5 554	4.5
Finance							
<i>Private New Capital Expenditure</i>							
Original	Dec qtr 96	\$m	11 430	1 763	15.8	2 107	-16.3
Seasonally adjusted	Dec qtr 96	\$m	10 398	1 520	-3.8	1 797	-15.4
<i>Gross State Product (Income based)</i>							
Current prices	Dec qtr 96	\$m	135 799	15 243	17.1	14 575	4.6
State Final Demand at average 1989-90 prices	Dec qtr 96	\$m	114 162	11 693	11.2	11 352	3.0

For more information . . .

The ABS publishes a wide range of statistics and other information on Australia's economic and social conditions. Details of what is available in various publications and other products can be found in the ABS Catalogue of Publications and Products available from all ABS Offices.

ABS Products and Services

Many standard products are available from ABS bookshops located in each State and Territory. In addition to these products, information tailored to the needs of clients can be obtained on a wide range of media by contacting your nearest ABS Office. The ABS also provides a Subscription Service for standard products and some tailored information services.

National Dial-a-Statistic Line

0055 86 400

Steadycorn P/L: premium rate 25c/20 secs.

This number gives 24-hour access, 365 days a year, for a range of important economic statistics including the CPI.

Internet

<http://www.abs.gov.au>

A wide range of ABS information is available via the Internet, with basic statistics available for each State, Territory and Australia. We also have Key National Indicators, ABS product release details and other information of general interest.

Sales and Inquiries

client.services@abs.gov.au

National Mail Order Service	(06) 252 5249
Subscription Service	1800 02 0608

	Information Inquiries	Bookshop Sales
SYDNEY	(02) 9268 4611	(02) 9268 4620
MELBOURNE	(03) 9615 7755	(03) 9615 7755
BRISBANE	(07) 3222 6351	(07) 3222 6350
PERTH	(08) 9360 5140	(08) 9360 5307
ADELAIDE	(08) 8237 7100	(08) 8237 7582
CANBERRA	(06) 252 6627	(06) 207 0326
HOBART	(03) 6222 5800	(03) 6222 5800
DARWIN	(08) 8943 2111	(08) 8943 2111

Information Services, Exchange Plaza, 2 The Esplanade, Perth WA 6000

© Commonwealth of Australia 1997

Recommended retail price: \$15.50



2130550005977
ISSN 0727-2367